







## Once Upon a Fallopian Tube

### Objectives:

Students will:

- Write and illustrate a storyboard depicting the journey of a fertilized egg

### Materials:

- Computer with Internet access
- “Once Upon a Fallopian Tube” handout
- Paper and pen, colored pencils

### Class Time:

- 1 hour

### Activity:

Sometimes it’s hard to believe that all human life depends on a chance meeting between an egg that’s 1/10 the size of a sesame seed and a sperm that’s 1/600th of an inch in a tube that that’s as wide as a piece of spaghetti. But it does, and, improbable as it may seem, it happens hundreds of thousands of times around the world each day.

Today we’re going to create a storyboard that tells the story of the beginning of your life, which is really the story of the beginning of everyone’s life: We are all here because a female ovulated, a male’s sperm fertilized the egg, and that fertilized egg, or zygote, grew in a uterus for 9 months. Using the TeensHealth.org articles for research, create a storyboard that depicts an egg’s journey through ovulation, fertilization, and implantation.

### Extension:

Describe the role of genes and chromosomes in this process.

## Reproducible Materials

### Handout: Female Reproductive System

[TeensHealth.org/classroom/9to12/body/systems/female\\_reproductive\\_handout1.pdf](https://www.TeensHealth.org/classroom/9to12/body/systems/female_reproductive_handout1.pdf)

### Handout: Once Upon a Fallopian Tube

[TeensHealth.org/classroom/9to12/body/systems/female\\_reproductive\\_handout2.pdf](https://www.TeensHealth.org/classroom/9to12/body/systems/female_reproductive_handout2.pdf)

### Quiz: Female Reproductive System

[TeensHealth.org/classroom/9to12/body/systems/female\\_reproductive\\_quiz.pdf](https://www.TeensHealth.org/classroom/9to12/body/systems/female_reproductive_quiz.pdf)

### Answer Key: Once Upon a Fallopian Tube

[TeensHealth.org/classroom/9to12/body/systems/female\\_reproductive\\_quiz\\_answers.pdf](https://www.TeensHealth.org/classroom/9to12/body/systems/female_reproductive_quiz_answers.pdf)



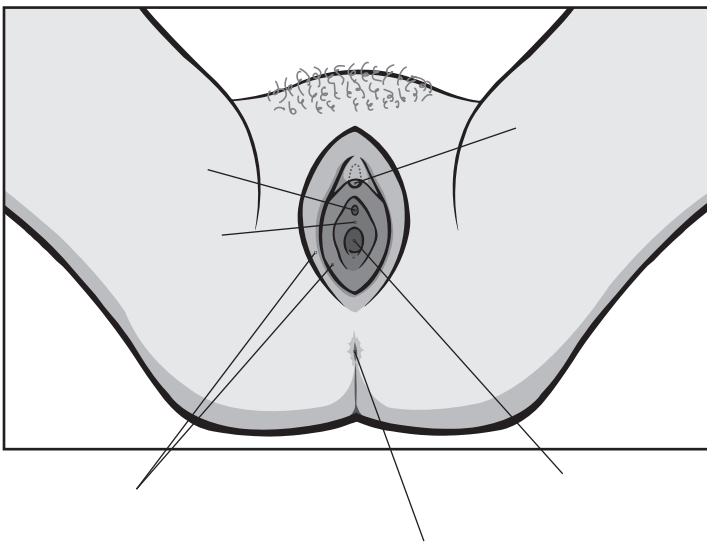
Name: \_\_\_\_\_

Date: \_\_\_\_\_

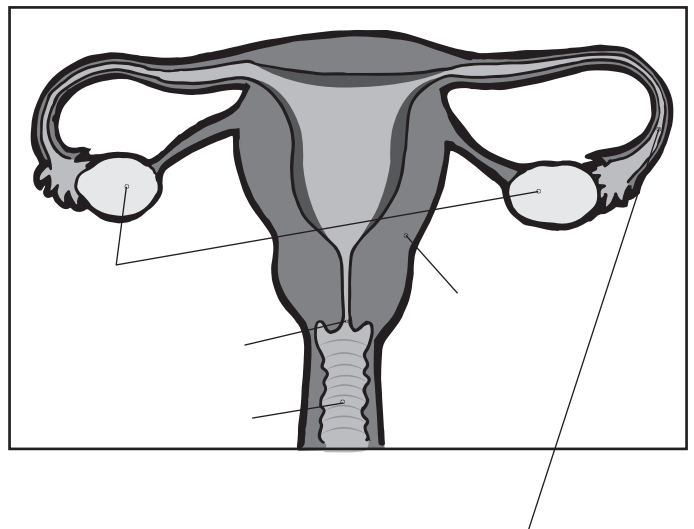
## Female Reproductive System

Instructions: Label the diagram and write the function of each part below. On the back, note at least 3 features of the female reproductive system that are specifically adapted for conceiving, carrying, and delivering a baby.

External View



Internal View



Labia \_\_\_\_\_

Clitoris \_\_\_\_\_

Urethra \_\_\_\_\_

Vagina \_\_\_\_\_

Uterus \_\_\_\_\_

Fallopian tubes \_\_\_\_\_

Ovaries \_\_\_\_\_

Hymen \_\_\_\_\_

Cervix \_\_\_\_\_

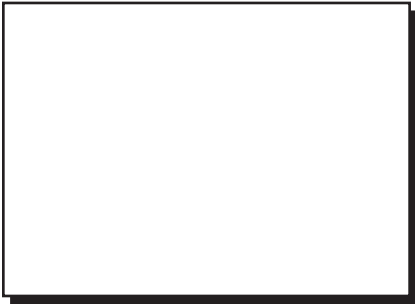


Name: \_\_\_\_\_

Date: \_\_\_\_\_

## Once Upon a Fallopian Tube

Instructions: Use this storyboard to write and illustrate the journey of an egg from ovulation through fertilization and implantation.



\_\_\_\_\_  
\_\_\_\_\_  
\_\_\_\_\_



\_\_\_\_\_  
\_\_\_\_\_  
\_\_\_\_\_



\_\_\_\_\_  
\_\_\_\_\_  
\_\_\_\_\_



\_\_\_\_\_  
\_\_\_\_\_  
\_\_\_\_\_



\_\_\_\_\_  
\_\_\_\_\_  
\_\_\_\_\_



\_\_\_\_\_  
\_\_\_\_\_  
\_\_\_\_\_



\_\_\_\_\_  
\_\_\_\_\_  
\_\_\_\_\_



\_\_\_\_\_  
\_\_\_\_\_  
\_\_\_\_\_



\_\_\_\_\_  
\_\_\_\_\_  
\_\_\_\_\_



Name: \_\_\_\_\_

Date: \_\_\_\_\_

## Quiz

Instructions: Answer each question.

1. The two oval-shaped organs that produce, store, and release eggs are called the \_\_\_\_\_.
2. Which one is not a menstrual problem?
  - a) amenorrhea
  - b) vulvovaginitis
  - c) dysmenorrhea
  - d) menorrhagia
3. True or false: Females make millions of eggs per day.
4. Fertilization occurs in the:
  - a) uterus
  - b) fallopian tubes
  - c) labia
  - d) vagina
5. \_\_\_\_\_ occurs about 2 weeks before a woman's period.
6. The \_\_\_\_\_ is a thick, muscular organ that can expand to accommodate a developing baby.
7. The lining of the uterus is called the \_\_\_\_\_.
8. The average menstrual cycle is about how long?
  - a) 1 week
  - b) 2 weeks
  - c) 28 days
  - d) 30 days
9. The \_\_\_\_\_ is the lower portion of the uterus that opens into the vagina.
10. About a week after fertilization, the fertilized egg is a hollow ball of cells called a \_\_\_\_\_.



## Quiz Answer Key

1. The two oval-shaped organs that produce, store, and release eggs are called the ovaries.
2. Which one is not a menstrual problem?  
a) amenorrhea  
b) vulvovaginitis  
c) dysmenorrhea  
d) menorrhagia
3. True or false: Females make millions of eggs per day.
4. Fertilization occurs in the:  
a) uterus  
b) fallopian tubes  
c) labia  
d) vagina
5. Ovulation occurs about 2 weeks before a woman's period.
6. The uterus is a thick, muscular organ that can expand to accommodate a developing baby.
7. The lining of the uterus is called the endometrium.
8. The average menstrual cycle is about how long?  
a) 1 week  
b) 2 weeks  
c) 28 days  
d) 30 days
9. The cervix is the lower portion of the uterus that opens into the vagina.
10. About a week after fertilization, the fertilized egg is a hollow ball of cells called a blastocyst.